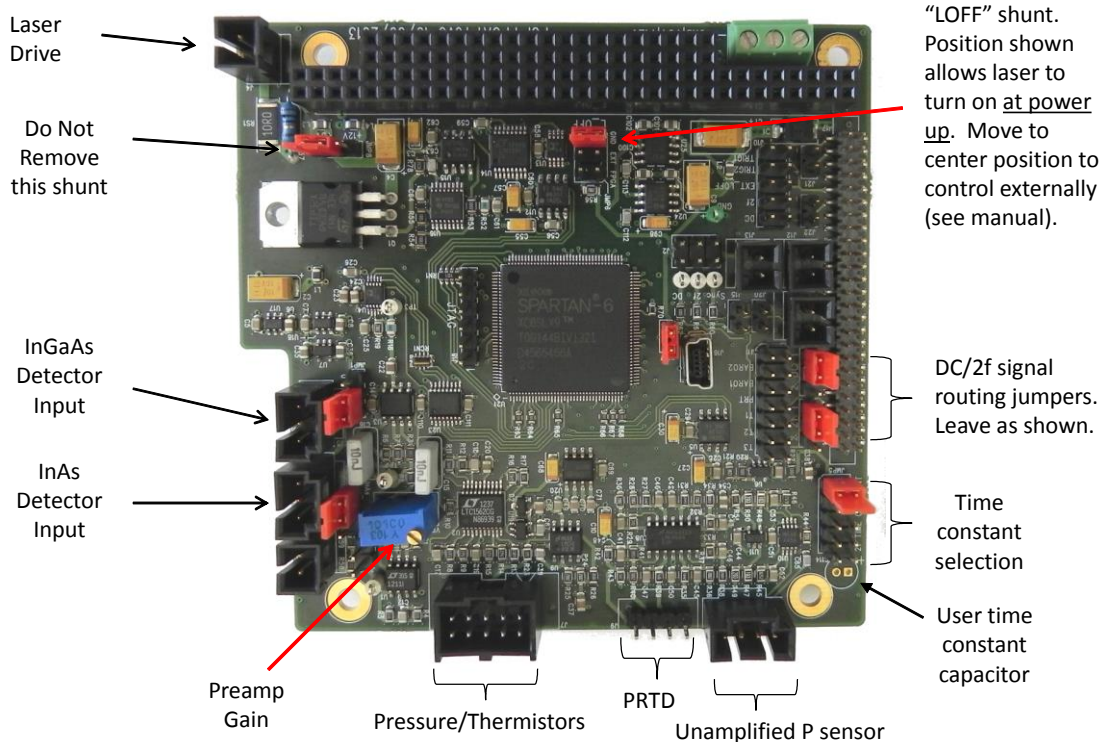
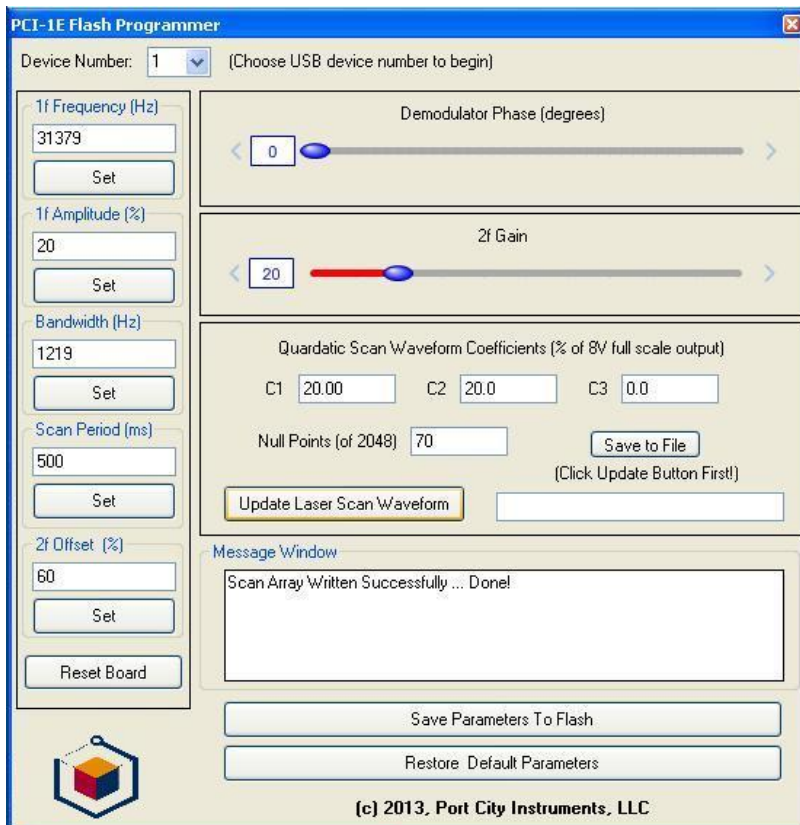


PCI-FPGA-1A Default Jumper Settings and Flash Parameters

PCI-FPGA-1A (Rev C) Jumpers (factory defaults)



PCI-FPGA-1A, Rev C



Default flash parameters for PCI-FPGA-1A controller board (1f amplitude and 2f Gain main vary). See user manual for complete descriptions of each parameter. Note that the default laser scan is from 40 mA ($C1 = 20\%$ of 200 = 40 mA) to 80 mA ($C2 = \text{scan range} = 20\%$ of 200 = 40 mA). Change these to values appropriate for the laser being used and ensure safe values before connecting a laser to the board!

The LOFF jumper (see photo above) should be moved to the "GND" position to allow the laser to turn on at power up (not recommended). As shipped, this jumper is in the center "EXT" position which requires an external digital control line for laser enable/disable (see manual).

Always test for valid laser current settings using a dummy 10 ohm, 1/2W resistor placed across the laser drive pins. Use a scope with the probe ground lead tied to power supply ground. DO NOT GROUND either laser drive pin (the laser cathode is not tied to ground).